

Welcome to our Hub



Welcome to our Learning Hub. Our Resourced Provision is set up to meet the learning needs of up to 8 children. The provision is a nurturing environment which is designed to allow children to follow their own interests and develop as competent and independent learners. Each child in the provision has a great deal to offer and so we plan whilst recognising each child's individuality, their efforts and achievements. Our hub is a place where children can explore their own interests in a safe and enabling environment, designed to challenge and develop learning.

Our hub is part of St Andrew's C of E Primary School. This is our school building and hall;



Curriculum

Every child in our Hub is helped to maximise their learning potential. After getting to know your child, an individual learning plan is constructed; where possible this is linked to interests your child may have and their preferred learning style.

Each child in the provision will also have the opportunity to access mainstream learning. This is supported by a resourced provision member of staff. We believe that inclusion in mainstream is vital and that the support given by the adult allows each child to have the confidence to join in and learn with their peers, providing excellent opportunities to access other areas of the curriculum - as well as making those social links with their peers.

We have high aspirations for our pupils and aim to provide them with the skills they need to improve their quality of life for the future, for example functional life skills and greater independence.

Areas of learning

As in a traditional classroom, our hub has tables at which learning takes place. However, the work undertaken is very much led by the child; their learning needs will dictate what learning, how this is undertaken and how much time is appropriate.



Children will have access to ICT, including the large interactive whiteboard, to aid their learning or interests.

We have a fully functioning kitchen in our hub and use this on a daily basis; preparing drinks and snacks and baking!



Craft work plays an important role in developing many skills.

Our school is lucky to have a qualified Forest School Leader. Children in the hub have the opportunity to join in with a session each Friday. We also use our beautiful surrounding area - just look at the enormous trees!



The Cool Kids programme is promoted by the OT Team. It helps children to develop both their gross and fine motor skills.

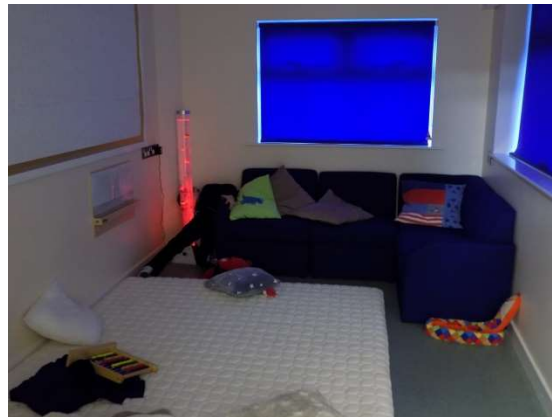
Our outside area is a safe place to be. And if you don't like getting wet, that's no problem as we have a large canopy to shelter you as well as our brand new play shed. We are also able to access the whole of the school grounds, including our large climbing equipment - good for developing those gross motor skills!



Our garden area is already used by members of the school who have been busy planting for the season ahead. Every garden could do with more helpers! We also have our own sensory planter - come and smell the delicious scents.

Lego is a fantastic tool for learning and play. We are lucky to have a big box of Lego ready to be explored.

Our learning Hub has its own relaxing, multi-sensory room for our children to 'chill out'. We have provided a comfy couch, bean-bags, floor mattress, lamps and sensory toys to aid in relaxation and calming.



Staff

The unit is highly staffed with a ratio of 1 adult to 2 children. The hub is led by a qualified teacher in collaboration with a HLTA and TA's. All adults are trained to a high level of expertise.

Every minute of the day is supported and provides a scaffold for the children to build confidence, widen social experiences and develop the skills needed to have successful relationships. All of our staff are highly skilled at working as a team to ensure that children build on success, have opportunity to experiment and try new things and cope with their feelings in a wide variety of situations and pressures.

Staff:

Mrs Nicola Richardson BA & QTS (Head of Hub)



Mrs Julie Forsyth (TA)



Ms Sue Lewis (HLTA)(ELSA trained)



Mrs Beth Barnes (TA)



Mrs Karen Brownsdon (TA)

